

MIXÒ EVO	
TECHNICAL DATA	SINGLE PHASE
Voltage	230 V power supply - 24 V auxiliary controls
Motor	2,2 kW plaster pump
Electric compressor	210 l/min - 0,52 kW
Electric water pump	45 l/min - 0,37 kW
Output *2	10 - 12 - 13 - 17 l/min
Hopper capacity	60 l
Loading height	99 cm
Size (LxWxH)	159x60x140 cm
Weight	210 kg

\*2 These data are not absolute but depend on the quality of the materials to be pumped, their consistency, wear and tear of the pump and the diameter of the hoses being used. The performance in distance and height can not be reached simultaneously.

## MIXÒ EVO applications



## MIXÒ EVO

### STANDARD EQUIPMENT

- Diaphragm compressor
- Electric water pump
- Electric control board with four-speeds inverter
- Standard mixer shaft
- Mixò worm gear-pump
- Cleaning equipment (bar scraper, washing sponge)
- 20 meters of electric cable, 5 meters of water suction hose, worm unlock spanner
- 15 meters (10+5) mortar hose Ø25 with cam-lock couplings
- 16 meters air rubber hose Ø13 with quick couplings
- Tool box with spray gun and series of nozzles
- Technical and EC conformity literature.

### SAFETY DEVICES

- Safety grid
- Electromagnetic safety device that stops the machine starting up
- Safety sensors to protect the mortar pump and the compressor.



# TURBOSOL®

PUMPING TECHNOLOGY FOR THE BUILDING INDUSTRY

**TURBOSOL**  
over 60 years  
of experience  
and reliability

# MIXÒ EVO

## PLASTER SPRAYER FOR READY-MIXED MATERIALS



**MIXÒ EVO IS THE NEW PLASTERING MACHINE WITH INVERTER FOR APPLYING DRY READY-MIXED PLASTERS QUICKLY AND EASILY, EVEN IN CONFINED SPACES**



# TURBOSOL®

PUMPING TECHNOLOGY FOR THE BUILDING INDUSTRY

TURBOSOL PRODUZIONE SPA

Sede e Stabilimento: Via Alessandro Volta, 1  
31030 Pero di Breda di Piave (Treviso) - Italia  
Tel. +39 0422 90251 - Fax +39 0422 904408  
E-mail: info@turbosol.it - www.turbosol.it



COMPANY WITH QUALITY MANAGEMENT  
SYSTEM CERTIFIED BY DNV  
= ISO 9001:2008 =

The equipment on the models and the optionals could vary due to specific market and legal requirements. The data in this brochure are purely indicative. Turbosol Produzione S.p.A. could make alterations to the models described in this brochure at any time for technical and commercial reasons.



# MIXÒ EVO

## PLASTER SPRAYER FOR READY-MIXED MATERIALS



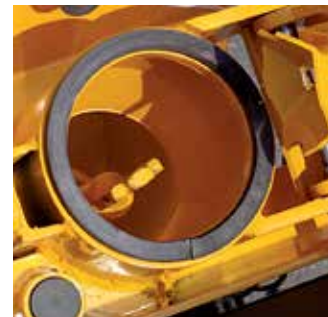
### Low energy consumption and high performance

MIXÒ EVO, the updated version of the single-phase plaster sprayer Mixò, is equipped with four-speeds inverter for low consumption especially in critical electricity supply conditions. Thanks to the high quality components used and the low energy consumption, this plaster sprayer is the top machine in its category.



### Simple maintenance and easy to operate in the jobsites

MIXÒ EVO can be easily disassembled in four parts for an easy access in difficult-to-reach jobsites. MIXÒ EVO: easy access to all components for simple maintenance works.



### Safety, simplicity and flexibility of use

Hopper with safety grid and gear motor with electromagnetic safety device. Once the vessel has been filled, one operator is sufficient to control the material flow directly from the spray gun. Four speeds for great results in different working conditions and with a wide range of materials.



### Construction quality

Diaphragm compressor with an excellent output/absorption ratio and low maintenance. Stainless steel self-priming water pump. All the components have been carefully selected to guarantee maximum reliability and long life.



### Applications

Ideal for mixing and spraying ready-mixed plasters based on gypsum, lime and gypsum, cement, lime and cement and thermal and acoustic insulating plasters.



### Why should I buy it

Great performance and low energy consumption. Thanks to the four-speeds inverter, MIXÒ EVO is the ideal solution for different working conditions and a wide range of materials. Its modularity facilitates the movement and placement in the working place. High quality components for high reliability and easy access to them for simple and quick maintenance. Built to comply with all national and international safety standards for a comfortable and safe use in any jobsite.

