

**TURBOSOL**  
over 60 years  
of experience  
and reliability

 **TURBOSOL**<sup>®</sup>  
PUMPING TECHNOLOGY FOR THE BUILDING INDUSTRY

### TRANSMAT 27.45

#### STANDARD EQUIPMENT

- screw air compressor
- 4-cylinders liquid cooled diesel engine
- certified pressure vessel with internal highly resistant wear plates
- automatic two-speed mixer shaft with orientated mixing paddles
- outlet collector Ø 65 mm with Perrot couplings
- hydraulic circuit for operating all components
- loading bucket and scraping shovel (DCB and DCBP versions)
- 40 meters (20+10+10) rubber hose Ø 65 mm with Perrot couplings
- metallic hose holding elbow and plastic hose bracket
- delivery hopper
- protection canopy for mechanical parts
- soundproofing conforming to current standards
- tool box, technical and approval literature

#### ACCESSORIES UPON REQUEST

- certified on-road towing set-up with brakes and lights (T version)
- automatic lubrication system
- high pressure cleaner with hose, gun and nozzles
- air-booster for additional compressor connections

#### SAFETY DEVICES

- emergency push button
- automatic shutdown of the mixer when the grill is opened
- protection sensors for the engine and compressor
- engine with low sound level and gas exhausts, conforming to current legislation

### ALL THE VERSIONS OF TRANSMAT 27.45

TECHNICAL DATA	DC	DCB	DCBP
Perkins diesel engine	404D22 - 37,3 kW - 51 HP	404D22 - 37,3 kW - 51 HP	404D22 - 37,3 kW - 51 HP
Compressor Rotair-Turbosol	4.500 l/min at 6 bar	4.500 l/min at 6 bar	4.500 l/min at 6 bar
Pressure tank capacity	270 l	270 l	270 l
Output per cycle	200 ÷ 220 l	200 ÷ 220 l	200 ÷ 220 l
Cycles per hour*2	14 ÷ 16	20 ÷ 22	22 ÷ 24
Max delivery height*2	100 ÷ 120	100 ÷ 120	100 ÷ 120
Max delivery distance*2	140 ÷ 150	140 ÷ 150	140 ÷ 150
Bucket capacity	---	270 l	270 l
Size (L x W x H)	397 x 150 x 150 cm	393*1(465*) x 150 x 220*(150*) cm	
Weight	1.470 kg	1.600 kg	1.650 kg

\* With lowered bucket. - \*1 With lifted bucket.

\*2 These data are not absolute but depend on the quality of the materials to be pumped, their consistency, wear and tear of the pump and the diameter of the hoses being used. The performance in distance and height can not be reached simultaneously.

### TRANSMAT 27.45 applications



# TRANSMAT 27.45

## MIXING AND PUMPING MACHINE FOR SCREED, MORTAR AND CONCRETE



TRANSMAT 27.45 IS ONE OF THE TOP MODELS IN THE RANGE OF MACHINES DESIGNED FOR MIXING AND PUMPING SCREEDS, INSULATING MIXTURES, CONCRETE AND AGGREGATES.

 **TURBOSOL**<sup>®</sup>  
PUMPING TECHNOLOGY FOR THE BUILDING INDUSTRY

TURBOSOL PRODUZIONE SPA  
Sede e Stabilimento: Via Alessandro Volta, 1  
31030 Pero di Breda di Piave (Treviso) - Italia  
Tel. +39 0422 90251 - Fax +39 0422 904408  
E-mail: info@turbosol.it - www.turbosol.it



COMPANY WITH QUALITY MANAGEMENT  
SYSTEM CERTIFIED BY DNV  
= ISO 9001:2008 =

The equipment on the models and the optionals could vary due to specific market and legal requirements. The data in this brochure are purely indicative. Turbosol Produzione S.p.A. could make alterations to the models described in this brochure at any time for technical and commercial reasons.

# TRANSMAT 27.45

## MIXING AND PUMPING MACHINE FOR SCREED, MORTAR AND CONCRETE

**TURBOSOL**  
PUMPING TECHNOLOGY FOR THE BUILDING INDUSTRY



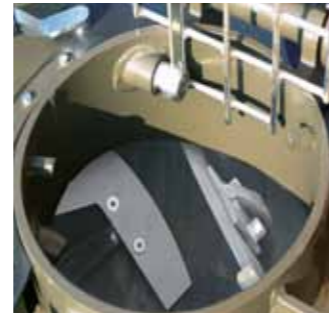
### Power and economy of use

Advanced technology, economical and compliant to world safety standards. The 4-cylinders liquid cooled diesel engine, automatically turns to low speed at the end of each pumping cycle. It has an output per cycle of 200 to 220 l and up to 24 cycles per hour. It can pump up to 150 m in distance and up to 120 m in height. The air output is 4.500 l/min.



### Safe and simple operations

Safety grill on the vessel, which automatically shuts down the mixer when it is opened. Safety sensors to protect the engine and compressor. Ecological diesel engine with low sound level and gas exhausts conforming to current legislation. Easy to reach air circuit and valves. Automatic lubrication system (optional).



### Productivity

270 l pressure vessel for top quality smooth mixing. Hopper with bag cutter. Newly designed bucket with built-in scraping shovel winch (DCBP version). Scraping shovel with sand collection angle increased.



### Efficiency

Automatic pumping cycle: at the end of the cycle, the airflow stops automatically and drops the motor to idle speed; the new cycle is then started up by simply pressing a button to guarantee low fuel consumption, reduced wear while maintaining the mixture smooth during the pumping cycles. Ergonomic controls. Delivery hopper that is easy to handle even through narrow openings.



### Applications

Suitable to mix and convey mixtures poor in cement or water. It can also pump insulating screeds based on expanded clay, polystyrene, perlite, vermiculite, cork, etc. TRANSMAT 27.45 can pump any type of aggregates such as sand, gravel, etc. directly from the pile to where they are needed. It can mix and pump masonry mortar and concrete with a granulometry up to 30 mm, according to the size of the delivery hoses.

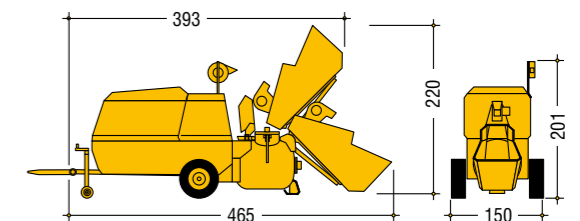


### Why should I buy it

Excellent performance and economy of use, high-quality mixtures and great flexibility thanks to three different versions. Easy to wash and to service thanks to the newly designed engine-compressor configuration, the automatic lubricating system and the high-pressure water pump (optional).



Size with drawbar (cm) DCB/DCBP



Size with drawbar (cm) DC

